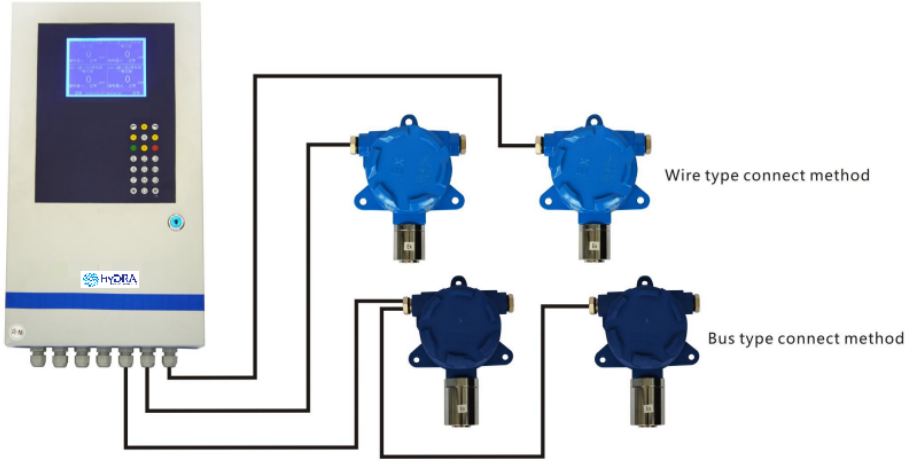


# MERKEZİ SİSTEM GAZ ALARM EKİPMANLARI



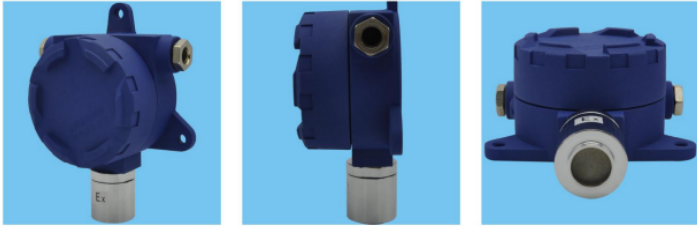
**HYDRA**  
TEKNOLOJİK SİSTEMLER LTD. ŞTİ.



## Basic parameters

Size : 480 mm \* 250 mm \* 130 mm  
Weight : about 6 kg  
Working voltage : AC220V 50 hz  
Output voltage : DC24V  
Channel number : simulation can provide 16, 32, road, digital signals can provide up to 255  
Display : can display 4 or 14 road one screen at a time  
Signal input : 485 digital signal, analog (4-20 ma current) signal input  
Communication interface : (optional) 1 road RS232 and RS485 digital bus interface, Standard Modbus RTU protocol or non-standard, can connect the computer monitor  
Wave rate : 9600 BPS  
Alarm way : first alarm more than 90 db alarm way; second alarm more than 120 db  
Control output: 8 bus channel relay, a common relay, line 1 public relay.(optional)  
32 channel relay control AC 250 v 5 a, 7 a DC 30 v  
Sampling accuracy : 12 AD  
Measuring range : 0-9999 (numerical) can be set up  
Connection mode : analog signal lines to two or three, four wire digital signal (two signal lines, two power cord)  
Temperature range : - 10 °C to 50 °C  
Humidity : 15% ~ 70% (RH) no condensation

## Multi-function LCD Alarm Control Cabinet



## Wire Gas Detetection Transmitter

## Bus System Gas Detection Transmitter

### Basic parameters

Size : 144 mm \* 190 mm \* 74 mm  
Weight : about 1130 g  
Sensor types : electrochemistry method(gas catalytic combustion type, special separately)  
Destination gas : oxygen (O<sub>2</sub>), gas (EX), poisonous and harmful gases (CO, H<sub>2</sub>S, NH<sub>3</sub>, CL<sub>2</sub>, etc.)  
Response time : ≤30s(O<sub>2</sub>); ≤40s(CO); ≤20s(EX)  
Working pattern : continuous work  
Working voltage : DC24V  
Output signal : 4-20 mA  
Output way : two wire or three wire, three wire system can output a set of relay switch signal  
Temperature range : Minus 20 °C to 50 °C  
Humidity : 15% ~ 90% RH (No condensation)  
Explosion-proof number : CE101084  
Explosion-proof marks : Exd II CT6  
Connection mode : three-wire system according to the instruction manual one-to-one connection, two wire circuit done meter processing  
Transmission cables : two core shielded cable, section 2 x 1.5 mm<sup>2</sup>(three-wire system adopts three core shielded cable 3 x 1.5 mm<sup>2</sup>)  
Transmission distance : <1000 m

### Basic parameters

Size : 144mm\*90mm\*74mm  
Weight : about 1130 g  
Sensor types : electrochemistry method (gas catalytic combustion type, special separately)  
Destination gas : oxygen(O<sub>2</sub>),gas (EX)  
Poisonous and harmful gases(CO,H<sub>2</sub>S,NH<sub>3</sub>,CL<sub>2</sub>, etc.)  
Response time : ≤30s(O<sub>2</sub>); ≤40s(CO); ≤20s(EX)  
Working pattern : continuous work  
Working voltage : DC24V  
Output signal : 485 digital signal  
Output : four four wire(two power cord, two signal lines)  
Temperature range : -20°C-50°C  
Humidity : 15%-90%RH(No condensation)  
Explosion-proof number : CE10-1084  
Explosion-proof marks : Exd II CT6  
Connection mode : four wire connection mode, in strict accordance with the manual connection  
Transmission cables : two core shielded cable or a four core shielded cable, Section 2\*1.5mm<sup>2</sup>\*2 or 4\*1.5mm<sup>2</sup>  
Transmission distance : <1000m

