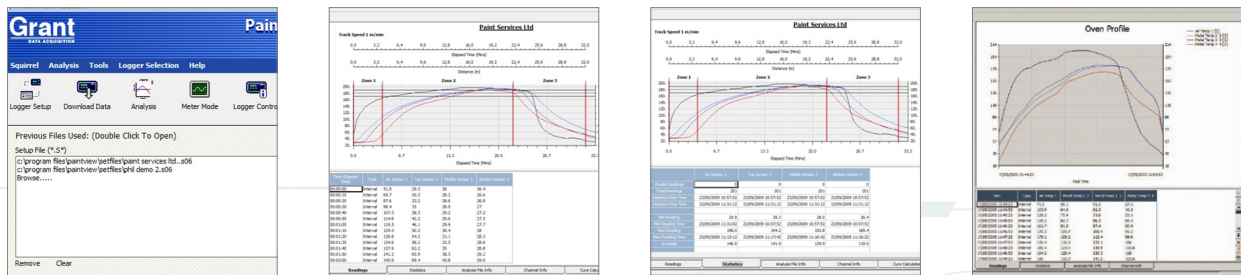


# Paintview Software

## for OMK610 paint oven profiling system

### PaintView – supplied with every OMK610 kit

PaintView is an easy to use software package designed for exclusive use in the paint and finishing industry and is included FREE with every OQ610 temperature logger. It enables easy setup of your logger and automatic download of your data from the logger into a meaningful measure of paint cure. For advanced paint cure calculations, it can also provide rapid interpretation of results. PaintView also gives you the additional benefits of graphically analysing your historical and on-line data, along with advanced reporting.



### Key features

- » User friendly spreadsheet style software for exclusive use in paint curing applications
- » PaintView offers the choice of the Grant 'classic' cure and area integration cure analysis methods
- » A database can be built of different paint types from various paint manufacturers
- » USPaintView provides zones for optimal paint solving in your process
- » With regular usage the software can pinpoint any uneven temperatures within the stoving process
- » The tolerance curve feature gives the ability to draw your ideal curve and check that your data fits
- » Easily view and control the logger status from one single screen
- » Security function protects your data and setup configurations
- » The graphing feature within the software offers fully annotated curves, zoom and cursor scrolling analysis
- » All settings can be saved for reuse
- » The report generator can provide standard reports on all functions of the curing process to provide your customers with proof of compliance to their stoving requirement
- » Export data into Excel™ or as a CSV file for customisable data analysis

# PaintView System Specifications

## Setup

- » Setup can be verified before it is sent to the logger
- » Converts setup files from previous SquirrelView or PaintView software
- » Report options for data presentation
- » Hide facility allows you to tailor setup interface to your own requirements
- » Printer setup information
- » Facility to setup templates

## Meter Mode

- » Displays up to 6 channels
- » 3 Plot types: line graphs, gauges & dials
- » Autoscaling: X and Y axis
- » Value readout: cursor position
- » Saves metered data for re-use in other software packages
- » Graph printout facility
- » Graph can be presented in various styles

## Download

- » Download straight to graph
- » Download directly as a CSV file

## Export

- » Easy to use export wizard
- » Customisable data export for Excel™, Lotus™ or other applications
- » Export viewer allows quickview facility of data format

## Additional features

- » Tips of the day – provides informative shortcuts
- » Logger diagnostics
- » Security features enables password setup
- » Communication wizard enables easy setup of USB
- » Interactive help

## Analysis

- » Easy analysis for OQ series loggers
- » Easy to use Explorer style interface
- » Fully configurable data views
- » Creation of templates
- » Flexibility for customisable reports
- » Facility to include text comments with graphs
- » Flexible zoom feature including X and Y axis
- » Statistics calculator
- » Autoscaling of Y axis
- » Value readout at cursor position
- » High and low level thresholds
- » Report facility: prints out graphs, readings, etc
- » Tolerance curve
- » Oven profile
- » Calculated channels
- » User notes
- » Archives
- » File convertor from Paintwise and Squirrelwise
- » Product cure calculation
- » Append/add datafiles
- » Run creator, extracting and joining data by time

## Minimum computer requirements

- » Microsoft Windows XP™, Vista™ or Windows 7™
- » Pentium II 266 MHz
- » RAM as specified by PC operating system
- » 60 Mb hard disk space and 1 CD drive
- » Colour SVGA monitor running at 800 x 600 (1024 x 768 recommended)
- » USB port